

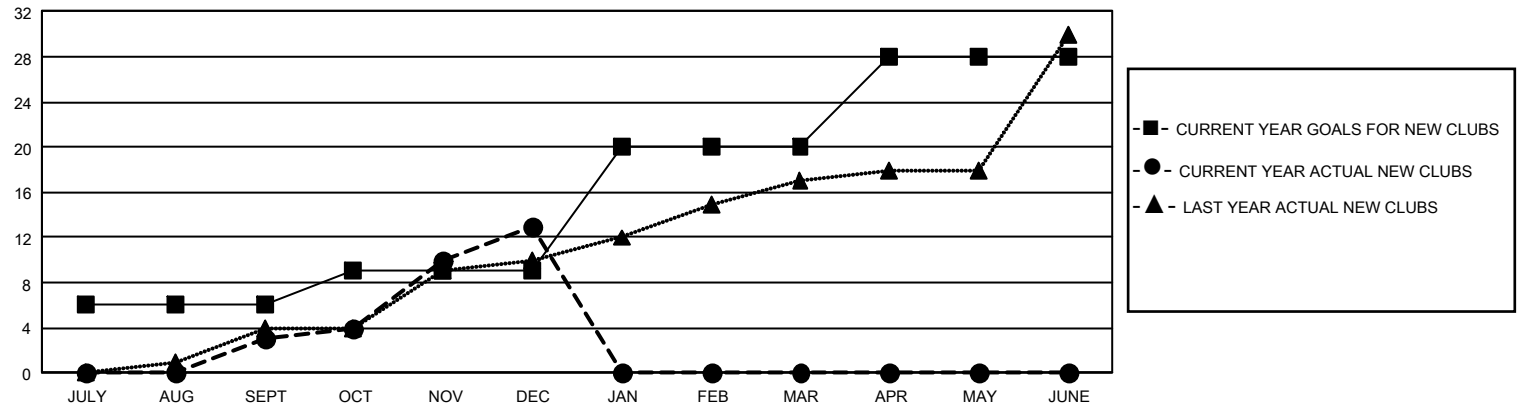


GMT Constitutional Area 3, Group D

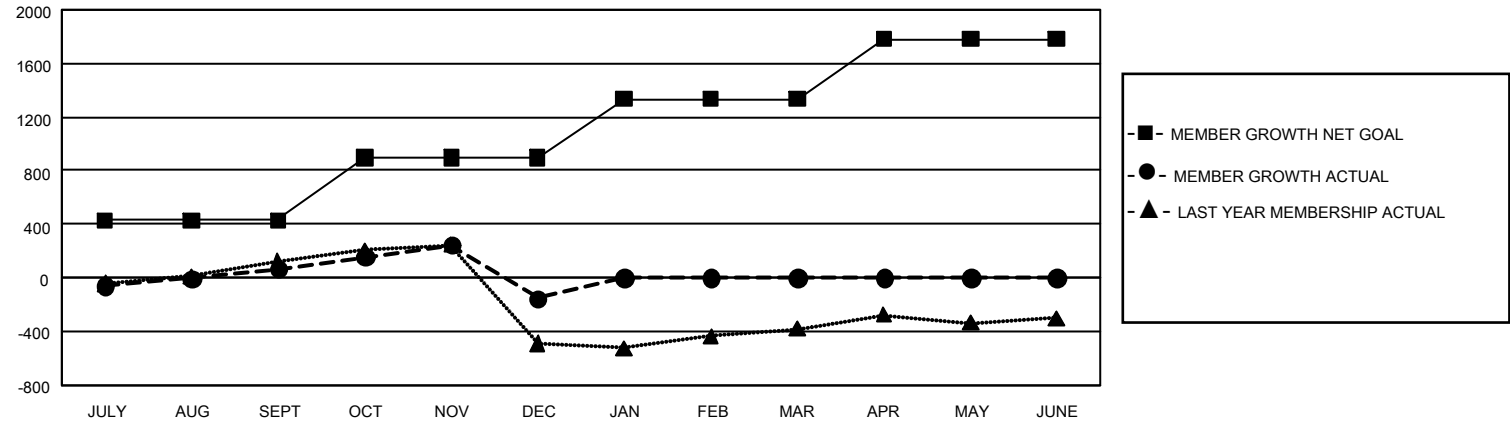
REPORT DOES NOT INCLUDE CLUBS IN UNDISTRICTED AREAS.

Clubs				Members			
RESULTS FOR 2024-2025				RESULTS FOR 2024-2025			
QUARTER	NEW CLUB GOAL	NEW CLUBS	DROPPED CLUBS	QUARTER	MEMBER GROWTH NET GOAL	MEMBER GROWTH ACTUAL	DROPPED MEMBERS ACTUAL (including transfers)
JULY/AUG/SEPT	18	3	10	JULY/AUG/SEPT	429	645	452
OCT/NOV/DEC	9	10	12	OCT/NOV/DEC	469	1,010	1,133
JAN/FEB/MAR	33	0	0	JAN/FEB/MAR	437	0	0
APR/MAY/JUNE	24	0	0	APR/MAY/JUNE	445	0	0

GOALS AND ACTUAL NEW CLUBS CUMULATIVE



GOALS AND ACTUAL MEMBERS CUMULATIVE



DROPPED CLUBS: 22		363 CLUBS OF 780 ADDED 1 OR MORE NEW MEMBERS	<u>GENDER DISTRIBUTION</u>	
<u>DROPPED MEMBERS</u>  DECEASED 54 CLUB CANCELLED 268 OTHER 1,244 <hr/> TOTAL 1,566			MALE 6,796 (45.14%)	
			FEMALE 8,258 (54.85%)	
			NON BINARY 1 (0.01%)	
			PREFER NOT TO ANSWER 1 (0.01%)	
		<a href="#">CLICK HERE FOR CUMULATIVE MEMBERSHIP DATA</a>	TOTAL FAMILY UNIT MEMBERS 0	
			FAMILY MEMBERS PAYING HALF DUES 0	